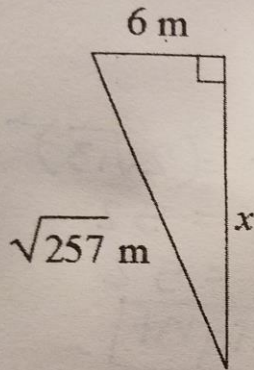
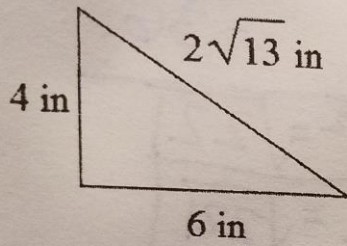


4.



$$\begin{aligned}
 6^2 + x^2 &= (\sqrt{257})^2 \\
 36 + x^2 &= 257 \\
 -36 &\quad -36 \\
 \hline
 x^2 &= 221 \\
 \boxed{x} &= \sqrt{221}
 \end{aligned}$$

9.



$$\begin{aligned}
 4^2 + 6^2 &= (2\sqrt{13})^2 \\
 16 + 36 &= 52 \\
 52 &= 52 \\
 \boxed{\text{Right}}
 \end{aligned}$$